

GATSBY



# T Level Ambassadors Network CPD- Employers

Thursday 15<sup>th</sup> January

# Purpose and Objectives

**Purpose-** To create a coherent CPD package for different audiences in the T Level Ambassadors Network to enable ambassadors to develop and share their practice to effectively support and scale up T Levels

## **Objectives:**

- Share employer reflections on supporting students through T Level industry placements
- Provide practical examples of addressing common challenges and improving placement experiences
- Highlight effective approaches and support that enable employers to deliver high-quality placements and scaling up

# Agenda

**4.00pm** Welcome, purpose, objectives and agenda

**4.10pm-** HepcoMotion – Maurice Porter

**4.15pm-** Bowmer and Kirkland - Laura Brown

**4.20pm-** UH Morecambe Bay NHS - Iain Hook

**4.25pm-** Q & A session

**4.35pm-** Breakout Rooms to consider how you may implement some of the ideas shared

**4.50pm-** Wider T Level support available for Employers

## When we started

Number of T Level students  
on placement: **8**

Year we started hosting  
placements: **2022**

## Where we are now

Number of T Level students  
on placement: **30**

Which T Levels:

- Design and Development  
(Engineering)
- Engineering & Process Control

# HepcoMotion

**HepcoMotion**<sup>®</sup>  
ADVANCED LINEAR SOLUTIONS



## When we started

Number of T Level students  
on placement: **2**

Year we started hosting  
placements: **2020**

## Where we are now

Number of T Level students  
on placement: **64**

Which T Levels:

- Design, Surveying and Planning
- Building Services Engineering
- Management and Administration

# Morecambe Bay NHS Trust



University Hospitals of  
Morecambe Bay  
NHS Foundation Trust

## When we started

Number of T Level students  
on placement: **18**

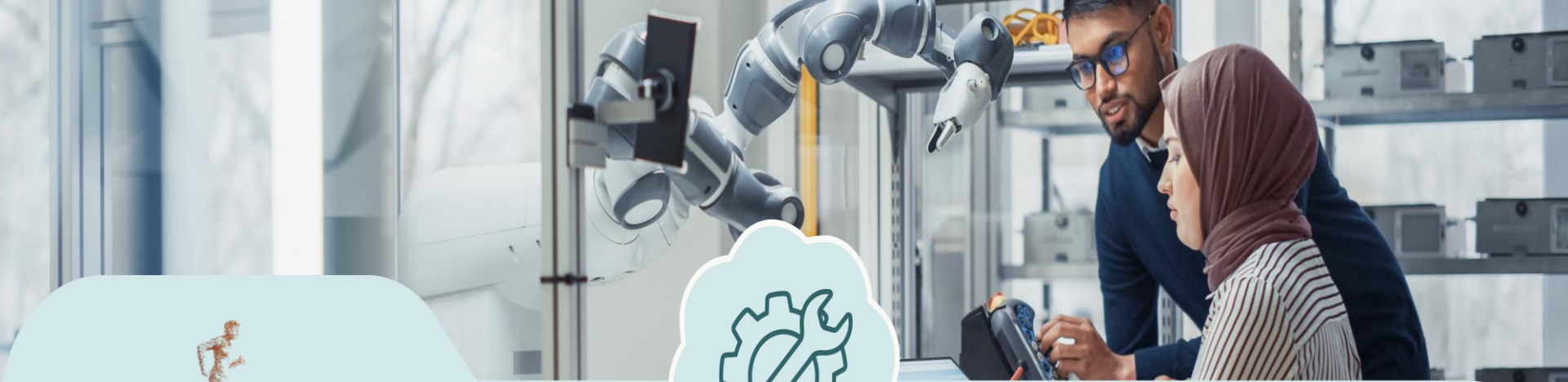
Year we started hosting  
placements: **2020**

## Where we are now

Number of T Level students  
on placement: **142**

Which T Levels:

- Health (132 students)
- Business and Management (4 students)
- Engineering (6 students)



GATSBY

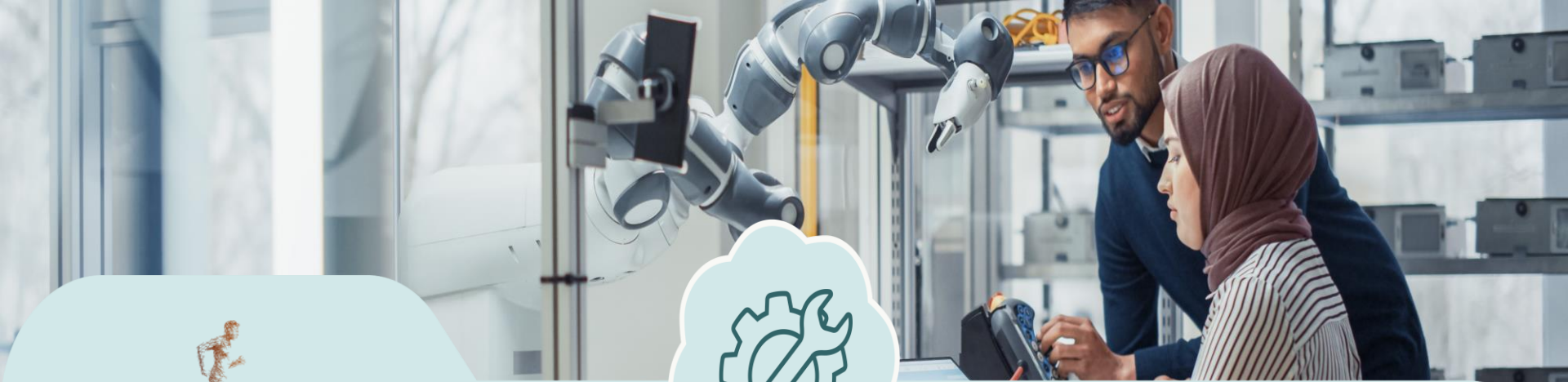


# Question and Answer Session

# Breakout Rooms

## Questions to consider:

- Which approach to T Level placements discussed today could you implement in your own setting, and what are the first steps you may take?
- What would be your approach to scaling up T Levels in your organisation?
- How can the T Level Ambassadors Network support you with this?



GATSBY



# Headline insights

*DfE employer support:*

# Plan, host and scale up T Level industry placements



Department  
for Education

- [Guidance, tools and case studies](#)
- [CPD webinars and in-person conferences](#) (April)
- [1-2-1 advice and support – contact the team](#)

Delivered by:



## T Levels and industry placement support for employers



### [About industry placements](#)

Find out more about what industry placements and T Levels are, and how they could work in your business.



### [Business benefits and case studies](#)

Discover the benefits of hosting an industry placement at your company, including the £1,000 employer incentive.



### [Plan industry placements](#)

Guidance to help you plan, including information about legal compliance, working with providers and paying students.



### [During industry placements](#)

How to work with students while they are on a placement, and end-of-placement reviews.



### [Skill areas and courses](#)

Discover the skill areas that industry placements cover and find out what placement students can offer.



### [Workshops and webinars](#)

Online events to help you understand, plan and prepare to offer industry placements.



# Gatsby support

The support available from Gatsby for employers includes:

- Education landscape
- Digital: Co-location projects
- Health: ICS industry placement network
- Construction: Site-based Employer network and Building Services Engineering
- Science: T level assets (alongside apprenticeships and Higher Technical Qualifications through The Science Council)
- Universities, Defence: specific programmes to support employers with industry placement opportunities in science, digital, engineering and other T Levels

**Does your industry or sector need further support?**



# Feedback poll



Please complete the short feedback poll in Teams.

Your feedback helps us

- Improve future CPD sessions
- Make content more relevant and useful
- Evidence impact and quality



**Many thanks for joining**

**Looking for more support?**

Contact the team: [hello@tlevelambassadors.co.uk](mailto:hello@tlevelambassadors.co.uk)