

GATSBY



# T Level Ambassadors network CPD- Senior Leaders

Wednesday 14<sup>th</sup> January 2026

# Who's on today's call

- Peter Baker - Association of Colleges
- Charlie Moss - Gatsby Charitable Foundation
- Matt Reynolds - Cirencester College
- Ruth Coyle - La Retriate
- Danny Brett - T Level Ambassadors Network

# Purpose and Objectives

**Purpose-** To create a coherent CPD package for different audiences in the T Level Ambassadors Network to enable ambassadors to develop and share their practice to effectively support and scale up T Levels

## **Objectives**

- To share strategic approaches to implementing and scaling T Levels across colleges
- Provide real examples of addressing barriers and enabling sustainable delivery at scale
- Highlight effective leadership and system support that underpin successful T Level delivery

# Agenda

**4.00pm** Welcome, purpose, objectives and agenda

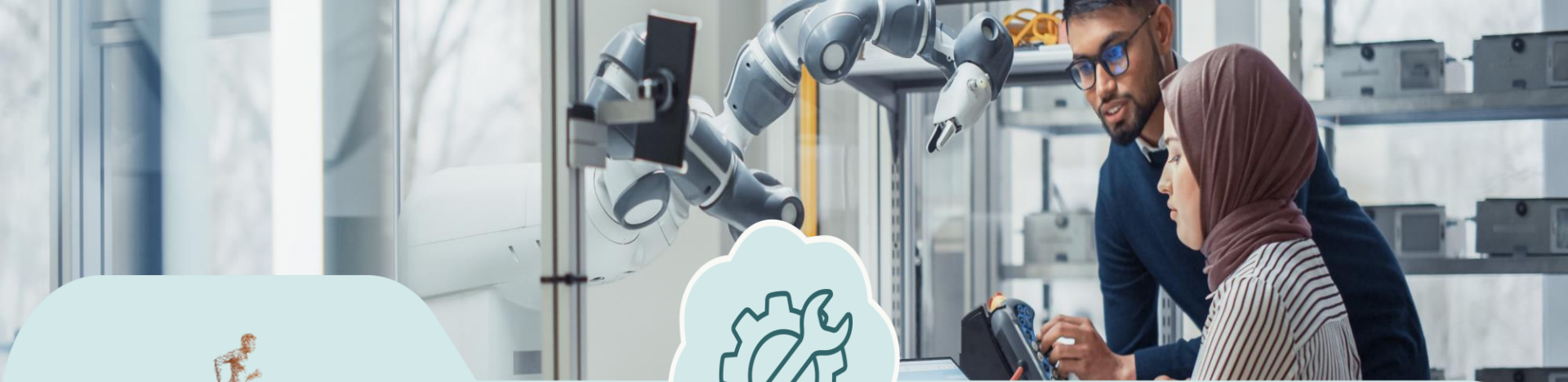
**4.10pm-** Cirencester College- Matt Reynolds

**4.20pm-** La Retraite - Ruth Coyle

**4.30pm-** Q & A session

**4.40pm-** Breakout Rooms to consider how you may implement some of the ideas shared

**4.55pm-** Wider T Level support available for Senior Leaders



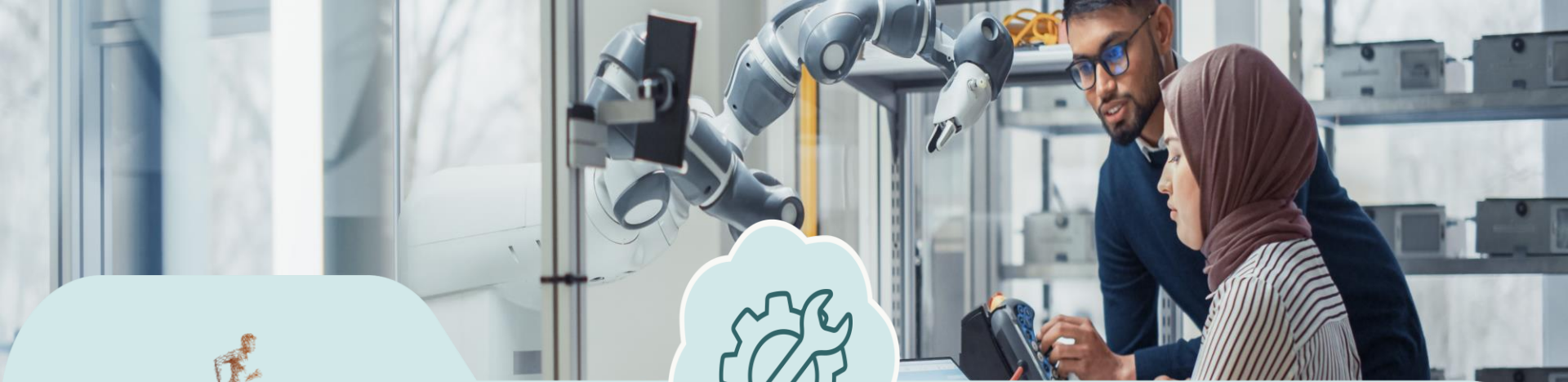
GATSBY



# Cirencester College Overview

Strategic approach - Scaling up T Levels

**Matt Reynolds- Principal and CEO**



GATSBY



# La Retraite Overview

Strategic approach- Scaling up T Levels

Ruth Coyle - Director

# La Retraite6

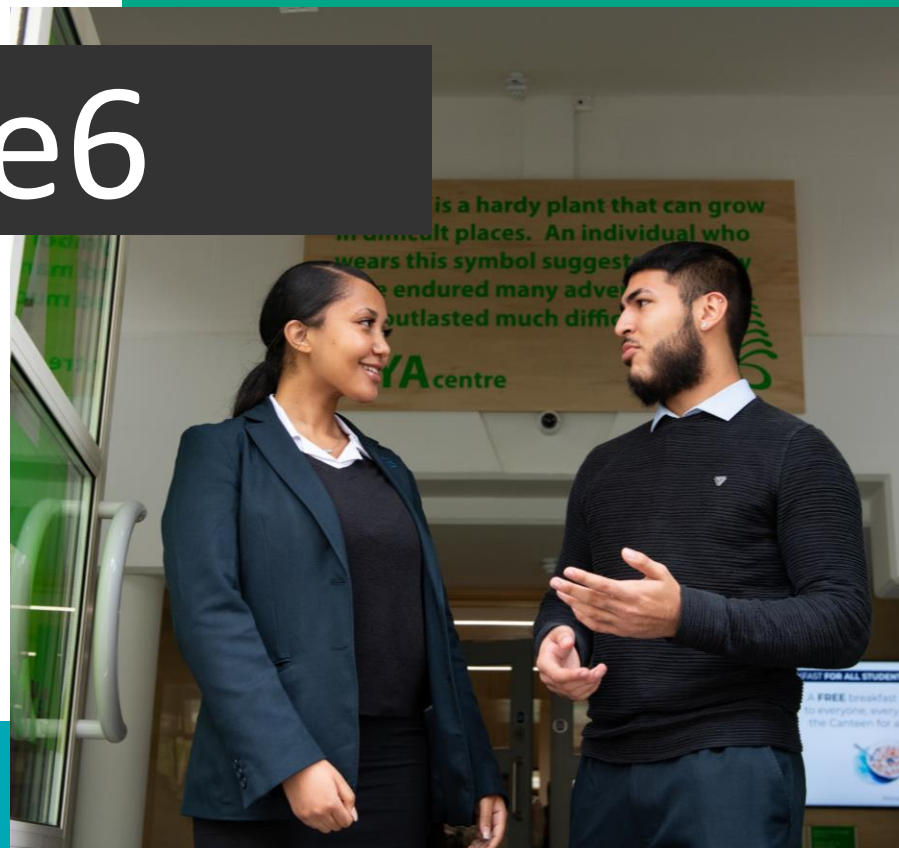
Ruth Coyle

Director at La Retraite

[www.sixthform.laretraite.co.uk](http://www.sixthform.laretraite.co.uk)

11-19 school based in  
South London

A Girl's Catholic School  
with a Mixed Sixth Form



# OFSTED Report 2023.pdf (laretraite.co.uk)

- In the sixth form, the introduction of T levels has been a great success. These qualifications have raised aspirations and further enriched the careers programme.
- The school has established and consistently delivers a high-quality curriculum. These choices support the sixth-form offer of both A levels and T levels, which includes health and midwifery, education and childcare, construction, legal services, and digital.
- The school provides an extensive careers programme, which draws on a wide range of industry, businesses and healthcare providers. The T levels on offer are firmly established in the sixth form, and students participate in work placements to apply their knowledge to real-life situations. For example, students may use industry standard coding software. They also have use of specialist midwifery rooms and work with local hospitals. These links and partnerships enrich the careers programme throughout the school. This means that pupils benefit from considered guidance and advice, as well as talks and workshops.



# Careers Policy Sept 2025.pdf



## **5) Roles & Responsibilities**

### **5.1 Senior Leadership and Governors**

Ensure strategic alignment of the careers programme with school improvement priorities  
Designate a Careers Leader to oversee implementation  
Nominate a governor with responsibility for careers  
Approve and review the provider access policy annually

### **5.2 Careers Leader, Business Engagement Officer and Heads of KS3, 4 & 5**

Develop, implement and monitor the school's careers programme  
Use data from Compass+, the Future Skills Questionnaire, and destinations tracking to improve provision  
Liaise with local employers, FE/HE institutions, and training providers  
Attend continued professional development via CEC and CDI resources

### **5.3 Teachers and Tutors**

Link subject content to careers  
Promote equality of opportunity in career pathways  
Deliver one careers lesson each half term during personal development lessons.  
Ensure students are logging their careers activities on Unifrog.

### **5.4 External Partners**

Deliver personal guidance (provided by Alix Boyle from Career Events)  
Facilitate workplace experiences and employer encounters  
Engage in the statutory Provider Access Arrangements

---

# Find a T Level | T Levels

The screenshot shows the website for Laretraite, a sixth form college. The main navigation bar includes: HOME, THE 6, THE EXPERIENCE, THE OFFER, THE LEGACY, THE NEWSROOM, THE DETAILS, and CONTACT US. The 'THE OFFER' menu is open, displaying a list of educational options:

- A Levels & Cambridge Technicals
- T Levels (highlighted with a right-pointing arrow)
- EPQ
- Personal Development
- The Access Project

The 'T Levels' dropdown menu is further expanded to show the following options:

- Digital Software Development
- Education and Early Years
- Design Surveying & Planning for Construction
- Health with Midwifery
- Legal Services
- T Level Foundation Year
- Join Us as a Partner

Other elements on the page include the Ofsted Outstanding Provider logo, the Laretraite logo, a large 'And Achieve' graphic, and a 'SOCIAL MEDIA POSTS' sidebar on the right. The URL in the browser is https://sixthform.laretraite.co.uk.

# Marketing - Educating Parents

Parents Advice for Career Conversations - Talking Futures

Success Stories - T-Level Info



# Facilities - Specialist equipment allocation



# Staffing and CPD



- Careers Lead on the SLT
- Business Engagement Officer
- Independent Careers Advisor (2 days)
- [T Level and T Level Foundation Year Events | Association of Colleges](#)
- [Teaching and Learning on the Digital Software Development T Level - Part 1 - in person | Learning | The Education and Training Foundation](#)
- [Communities of practice - Technical Education Networks](#)
- [Strategic Development Network | T Level and industry placement support](#)

# Scaling up



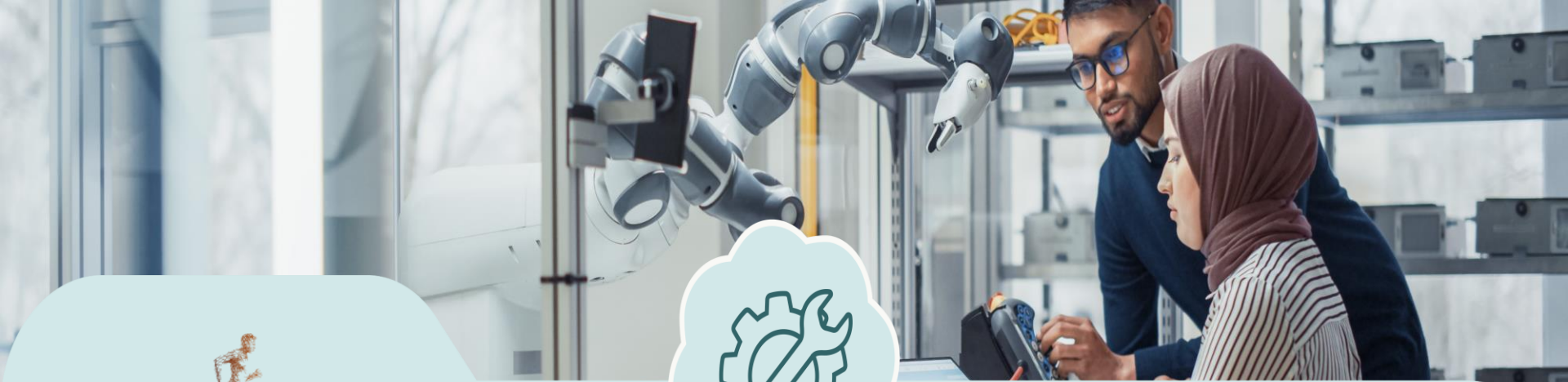
- Managing assessments – Move ESP to November
- Securing placements - Careers Hub, Alumni, Small group projects
- [La Retraite Roman Catholic Girls' School - The La Retraite Legacy](#)
- [https://www.linkedin.com/posts/ruth-coyle-flynn-bem-40874879\\_tlevel-construction-design-activity-7402000994437394432-H5wR?utm\\_source=share&utm\\_medium=member\\_desktop&rcm=ACoAABCpYEgBGnsa\\_nGS7aBRVBMDsXZxyi-7fXw](https://www.linkedin.com/posts/ruth-coyle-flynn-bem-40874879_tlevel-construction-design-activity-7402000994437394432-H5wR?utm_source=share&utm_medium=member_desktop&rcm=ACoAABCpYEgBGnsa_nGS7aBRVBMDsXZxyi-7fXw)

# Rewards



- Outstanding OFSTED
- Improved Destination data
- Increase in Admissions
- Social Mobility for students





GATSBY



# Question and Answer Session

# Breakout Rooms

## Questions to consider

- Which strategy or approach to T Level delivery discussed today could you implement in your own setting, and what are the first steps you may take?
- What could the T Level ambassador network do to support you with this?

# Wider AoC Support Available

Provider Insight Hubs (including links to book)

New College Durham – Wednesday 28 January 2026 T Level Provider Insight Day - New College... | Association of Colleges

Barnsley College – Monday 09 March 2026 T Level Provider Insight Day - Barnsley... | Association of Colleges

NSCG – Stafford College – Wednesday 11 February 2026 T Level Provider Insight Day - NSCG | Association of Colleges

East Kent College Group – Ashford College – Wednesday 22 April 2026 T Level Provider Insight Day - East Kent... | Association of Colleges

University Centre Somerset College Group Taunton College – Friday 15 May 2026 - T Level Provider Insight Day - Taunton... | Association of Colleges

# Events and Resources

Visit our [Provider Support Homepage](#) to get acquainted with the resources available. (*Events, Padlet, Mentoring, Networks, Newsletter, Podcast, T Level Planner, Contact information*).

For additional support and guidance, check out the [DfE T Level Support for Schools and Colleges](#).

# Contact Us



[tlevelsupport@aac.co.uk](mailto:tlevelsupport@aac.co.uk)



Hotline

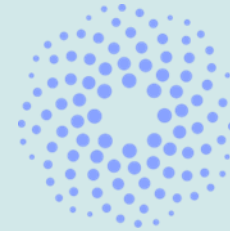
0207 0342612

9.00am – 5.30pm

# Gatsby support

The support available from Gatsby for senior leaders:

- Curriculum Design Groups (CDGs)- [Sue.clarke@gatsby.org.uk](mailto:Sue.clarke@gatsby.org.uk)
- Technical education networks programme
- Communities of practice



**Technical  
Education  
Networks**

- If you'd like your teachers to join our CoPs, please send them the sign up here <https://forms.office.com/e/McuYW5fiGP>
- Join our mailing list for broader TEN updates here, <https://www.technicaleducationnetworks.org.uk/contact/>

# Wider Support Available

- Awarding bodies support (Pearson, Pearson Resources, NCFE, City & Guild, WJEC)
- TLPD programme with ETF
- Professional organisation support (e.g. Science Council, RA Eng)



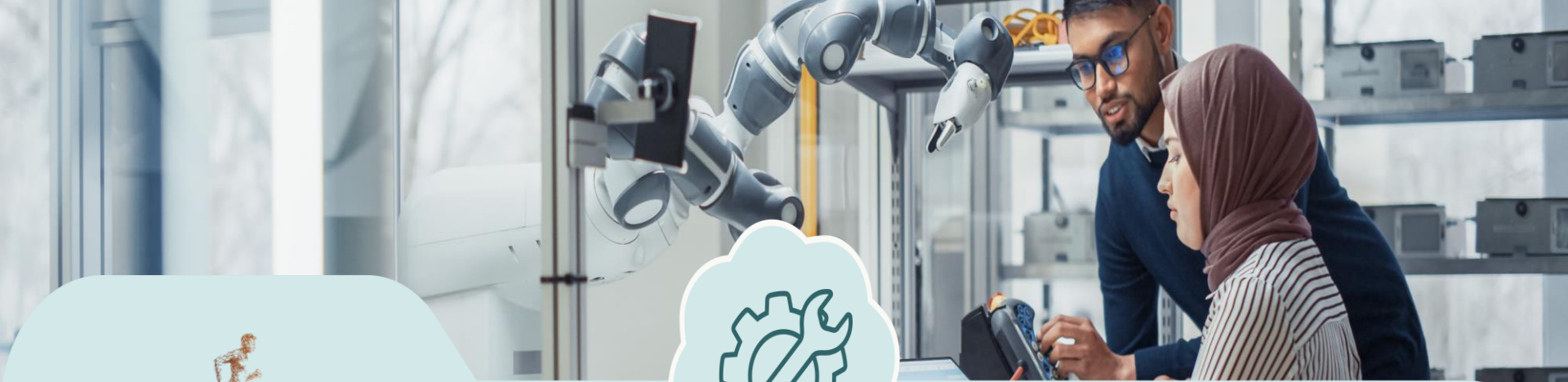
# Feedback poll



Please take 1 minute to complete the feedback poll in Teams.

Your feedback helps us:

- Improve future CPD sessions
- Make content more relevant and useful
- Evidence impact and quality



GATSBY



# Many thanks for listening